

E14 LAMPHOLDERS

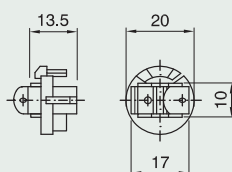


E14 three-piece thermoplastic lampholder and accessories

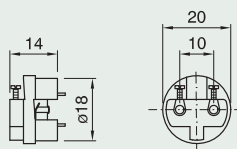
Rated current: 2A
 Rated voltage: 250V
 Rated temperature: T190
 Overvoltage category : II
 Material: thermoplastic
 Other colours on request
 Approval:



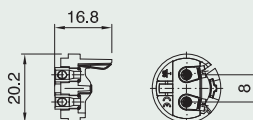
Insert for E14 three-piece lampholder with locking device
Terminals: spring type for rigid or flexible cables
 0.5 ÷ 1.5 mm²
Packaging: 1000 pieces
code 018912
FRUTTO E14 T190 TPMA



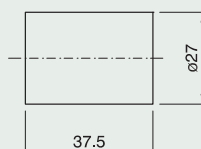
Insert for E14 three-piece lampholder with locking device
Material: thermosetting resin
Terminals: screw type for rigid or flexible cables
 0.5 ÷ 1.5 mm²
Packaging: 1000 pieces
code 019399
FRUTTO E14 T190 UNIVERSALE



Insert for E14 three-piece lampholder With locking device
Material: thermoplastic
Terminals: screw type for rigid or flexible cables
 0.5 ÷ 1.5 mm²
Packaging: 1000 pz
Cod. 029555
FRUTTO E14 T190 TPMV



Plain outer shell for E14 three-piece lampholder
Packaging: 1000 pieces
code 019046 black
code 019045 white
code 019867 gold
CAMICIA E14 ART. 500 TP NERO



Threaded outer shell for E14 three-piece lampholder

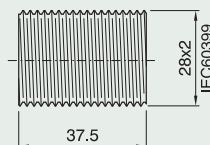
Packaging: 1000 pieces

code 019050 black

code 019047 white

code 019868 gold

CAMICIA E14 ART. 600 TP BIANCO



Partly threaded outer shell with flange

for E14 three-piece lampholder

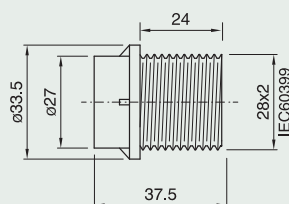
Packaging: 1000 pieces

code 019052 black

code 019051 white

code 019869 gold

CAMICIA E14 ART. 602 TP NERO



Dome for E14 three-piece lampholder

Connection: with metal nipple (M10x1)

and stem locking screw

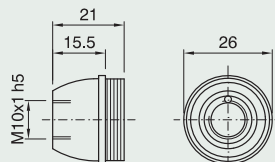
Packaging: 1000 pieces

code 019663 black

code 019662 white

code 019664 gold

CAPPELLO E14 NIP TP BIANCO



Dome for E14 three-piece lampholder with side hole

Connection: with metal nipple (M10x1)

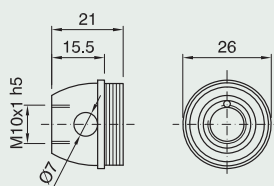
and stem locking screw

Packaging: 1000 pieces

code 023248 black

code 023193 white

CAPPELLO E14 NIP FL TP BIANCO



Dome for E14 three-piece lampholder

Connection: threaded entry

(M10x1) with retainer

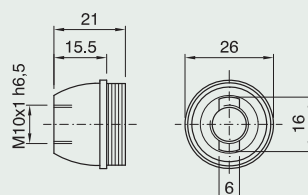
Packaging: 1000 pieces

code 017304 black

code 017303 white

code 017305 gold

CAPPELLO E14 ASF TP BIANCO



E14 LAMPHOLDERS



Dome for E14 three-piece lampholder

Connection: threaded entry (M10x1) with retainer and stem locking screw

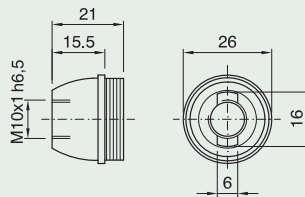
Packaging: 1000 pieces

code 028030 black

code 028029 white

code 028031 gold

CAPPELLO E14 ASFV TP NERO



Dome for E14 three-piece lampholder

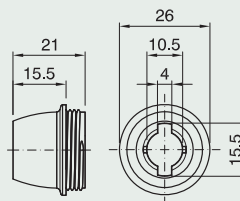
Connection: with Ø10.5 mm hole

Locking device notch: pass-through

Packaging: 1000 pieces

code 025530 white

CAPPELLO E14 ASS TP BIANCO



Shade ring for E14 lampholder

Height: 9,5 mm

Diameter: 43 mm

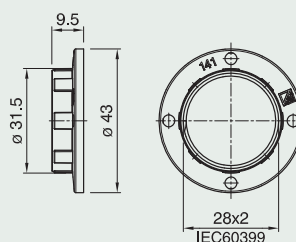
Packaging: 1000 pieces

code 012423 black

code 012422 white

code 012421 gold

GHIERA E14 ART. 141 NERO



Shade ring for E14 lampholder

Height: 7 mm

Diameter: 35 mm

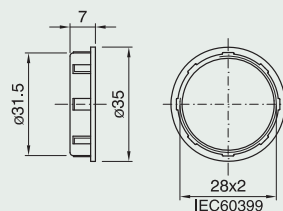
Packaging: 1000 pieces

code 012261 black

code 012260 white

code 013240 gold

GHIERA E14 ART. 142 BIANCO



Shade ring for E14 lampholder

Height: 15 mm

Diameter: 43 mm

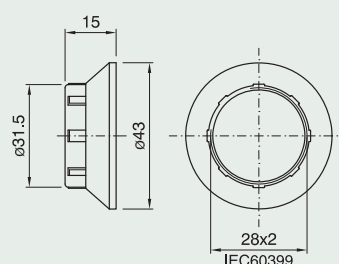
Packaging: 1000 pieces

code 018287 black

code 018286 white

code 018288 gold

GHIERA E14 ART. 143 BIANCO



Shade ring for E14 lampholder

Height: 37 mm

Diameter: 45 mm

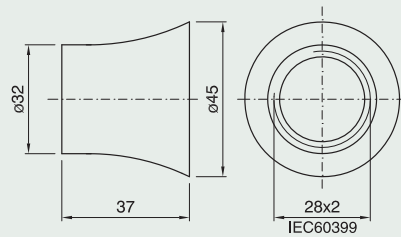
Packaging: 1000 pieces

code 018290 black

code 018289 white

code 018291 gold

GHIERA E14 ART. 144 BIANCO



Shade ring with metal basket spring

for E14 lampholder

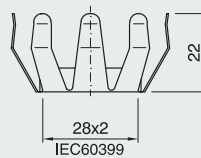
Use: to connect glass parts with $\varnothing 38 \div 41$ mm hole

Height: 22 mm

Packaging: 1000 pieces

code 018006

MRF 14 MOLLA A RAGNO



Shade ring with basket spring and metal flange

for E14 lampholder

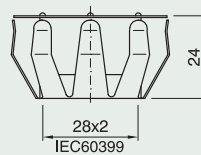
Use: to connect glass parts with $\varnothing 38 \div 41$ mm hole

Height: 24 mm

Packaging: 1000 pieces

code 002319

MRFA 14 MOLLA A RAGNO



Closed cord grip/insulator

for E14 three-piece lampholder*

Use: class II applications with flat cables

H03VVH2-F 2x0.75 mm² to use with a threaded metal stem (internal diameter: 6.5 ÷ 6.8 mm)

Packaging: 1000 pieces

code 016622

SIB14 SERRACAPO INTERNO

Approval:

